

SUNSYSTEM®

Solar water heaters SON - with two coils.

Floor standing. For indirect heating;
Suitable for solar and space-heating systems

Modifications and sizes, Liters:

Vertical models:

150, 200, 300, 400, 500, 750, 1000, 1500

Horizontal models :

300, 400, 500, 750, 1000, 1500

Product features

High efficiency insulation and outer casing of PVC with RAL 9006 color.

Multi-position mounting of temperature sensor.

Complex corrosion protection realized by means of titanium enamel and anode protection.

All threads are internal.

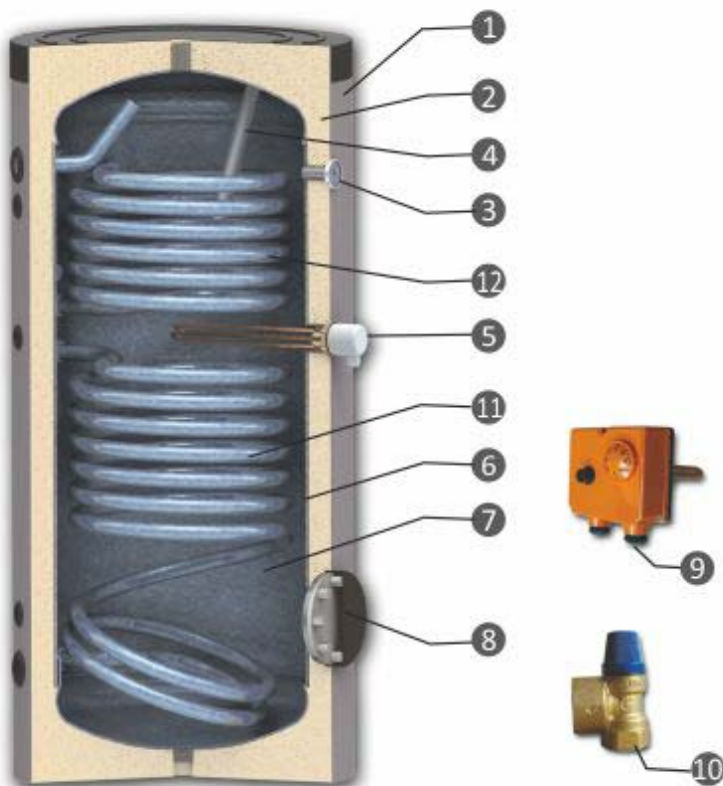
Easy installation.

Convenient inspection opening.

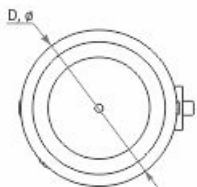
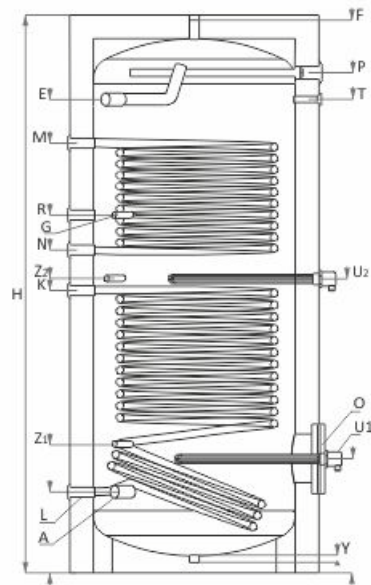
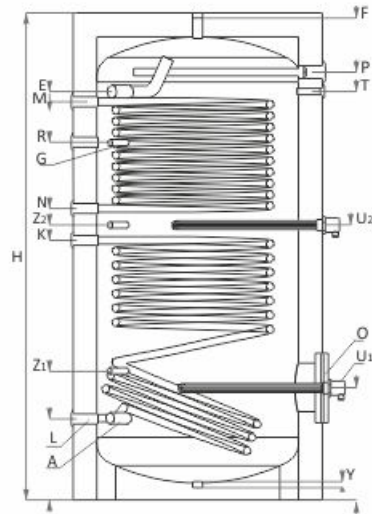
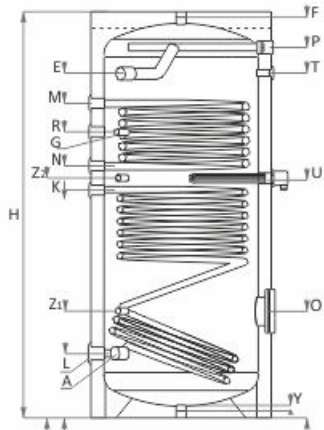
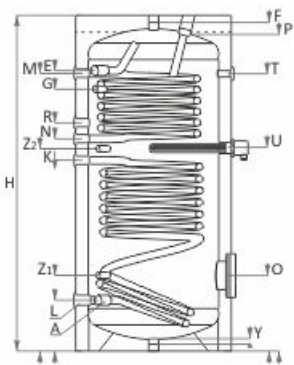
Available modifications with vertical and horizontal orientation.

Two heat exchangers enables the tank to utilize an external sources of renewable energy, such as a solar system and a biomass boiler.

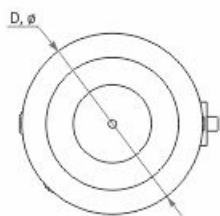
- Optional kit for electric heating with nominal power 3kW, 4.5kW, 6kW or 7.5kW.



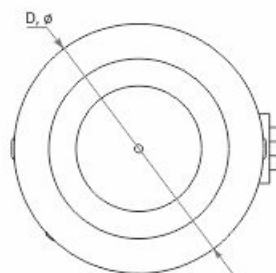
1. Aesthetic PVC jacket with color RAL 9006
2. Highly efficient thermal insulation
3. Thermometer
4. Anode protector (DIN 4753-6)
5. Electric heating element
6. Water tank of low-carbon steel
7. Titanium enamel (DIN 4753-3)
8. Inspection opening with flange cover
9. Thermostat with integrated thermal protection
10. Safety valve, 8 bar
11. Lower coil S1
12. Upper coil S2



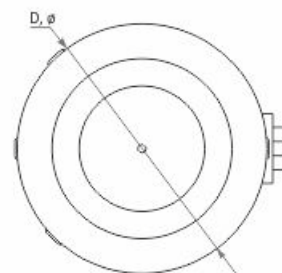
SON 300



SON 500



SON 1000



SON 1500

		SON 150	SON 200	SON 300	SON 400	SON 500	SON 750	SON 1000	SON 1500	
Lower S1 / Upper S2 Heat exch. coil	Capacity	l	150	200	300	400	500	750	1000	1500
	Height H / Min. vertical clearance	mm	1070/1210	1340/1460	1420/1580	1470/1670	1720/1890	2000/2030	2050/2070	2310/2370
	Diameter D	mm	ø 560	ø 560	ø 660	ø 750	ø 750	ø 950	ø 1050	ø 1050
	Insulation		50 mm rigid PU			50 mm rigid PU		100 mm soft PU, removable		
	Operating pressure / max. temperature	bar/°C	10/95	10/95	10/95	10/95	10/95	10/95	10/95	10/95
	Test pressure of tank	bar	15	15	15	15	15	15	15	15
	Heat exchange surface S1/S2	m ²	0.74/0.4	0.9/0.6	1.2/0.9	1.5/1	1.8/1.2	2.1/1.4	2.7/1.9	3/2.5
	Coil capacity S1/S2	l	4.56/2.47	5.55/3.70	7.40/5.55	9.25/6.17	11.10/7.40	12.95/8.63	16.65/11.72	18.50/15.42
	Prolonged power acc. to DIN 4708; 80/60/45 °C, S1/S2	kW m ³ /h	25/15 0.61/0.37	29/18 0.71/0.44	53/21 1.30/0.52	62/27 1.52/0.66	72/34 1.77/0.84	80/50 1.97/1.23	105/32 2.58/1.52	131/74 3.22/1.82
	NL – power coeff.at 60°C, S1/S2		2.5/1	4.5/1.5	11/2	13/2.2	18/2.8	32/10	42/28	64/34
	Pressure drop Δp, S1/S2	mbar	65/48	75/55	120/70	180/80	210/90	210/150	260/210	310/260
	Oper. pressure / max. coil temperature	bar/°C	16/110	16/110	16/110	16/110	16/110	16/110	16/110	16/110
	Test pressure	bar	25	25	25	25	25	25	25	25
	Thermometer		✓	✓	✓	✓	✓	✓	✓	✓
	Anode protector		✓	✓	✓	✓	✓	✓	✓	✓
	Electric heater (optional)	kW	3÷7,5	3÷7,5	3÷7,5	3÷7,5	3÷7,5	3÷7,5	2x7.5	3x7.5
	Weight	kg	65	82	118	160	185	263	315	367
	Lower coil outlet S1	L, mm	G1"/202	G1"/202	G1"/215	G1"/270	G1"/270	G1"/300	G1"/330	G1"/330
	Cold water inlet	A, mm	G1"/202	G1"/202	G1"/215	G1½"/270	G1½"/270	G1½"/300	G1½"/330	G1"/330
	Sensor sleeve for thermostat	G, mm	G½"/788	G½"/1037	G½"/1104	G½"/1054	G½"/1206	G½"/1435	G½"/1497	G½"/1497
Lower coil inlet S1	K, mm	G1"/592	G1"/692	G1"/805	G1"/850	G1"/960	G1"/970	G1"/1080	G1"/1180	
Recirculation	R, mm	G½"/788	G½"/987	G½"/1007	G1"/1105	G1"/1206	G1"/1405	G1"/1497	G1"/1497	
Upper coil outlet S2	N, mm	G1"/674	G1"/812	G1"/894	G1"/952	G1"/1062	G1"/1160	G1"/1220	G1"/1350	
Upper coil inlet S2	M, mm	G1"/874	G1"/1112	G1"/1170	G1"/1210	G1"/1350	G1"/1560	G1"/1670	G1"/1800	
Hot water outlet	E, mm	G1"/894	G1"/1168	G1"/1182	G1½"/1240	G1½"/1453	G1½"/1630	G1½"/1710	G1½"/1985	
Air vent sleeve	F, mm	G1"/1070	G1"/1340	G1"/1410	G1"/1460	G1"/1710	G1"/2000	G1"/2050	G1"/2330	
Inspection opening	O ø mm	110/180 309	110/180 309	110/180 320	110/180 450	110/180 450	200/280 450	200/280 470	200/280 470	
Drain sleeve	Y, mm	G1"/20	G1"/20	G1"/20	G1"/20	G1"/20	G1"/20	G1"/20	G1"/20	
Thermometer	T, mm	G½"/822	G½"/892	G½"/897	G½"/950	G½"/1168	G½"/1435	G½"/1497	G½"/1497	
Anode protector	P, mm	G1½"/1070	G1½"/1340	G1½"/1410	G1½"/1318	G1½"/1568	G1½"/1768	G1½"/1798	G1½"/2082	
Electric heating element	U, mm	G1½"/645	G1½"/752	G1½"/852	G1½"/901	G1½"/1011	G1½"/1040	G1½"/470,1150	G1½"/470, 1230	
Additional sensor sleeve	Z, mm	G½"/352 G½"/631	G½"/302 G½"/752	G½"/320 G½"/852	G½"/450 G½"/901	G½"/450 G½"/1011	G½"/535 G½"/1040	G½"/530 G½"/1150	G½"/530 G½"/1230	